

PROPOSED  
SITE PLAN

QUIET STUDY ROOMS WITH GLASS STOREFRONTS FOR VISIBILITY

PROPOSE AN OPEN AREA FOR SEATING AND STUDY WITH REDUCED AND LOW SHELVING

OPEN LOBBY SPACE WITH SOFT SEATING, CURVED BENCHES, LOW SHELVING, AND IMPROVED LIGHTING. THE EXISTING OVERHEAD FIXTURE COULD BE REUSED AND RAISED ABOVE THE UPPER LEVEL CEILING OR REPLACED WITH NEW FIXTURE

REMOVE EXTG WALL. CREATE NEW ENTRY TO OFFICE

EXTG PANELS/PARTITIONS REMOVED TO IMPROVE CIRCULATION

EXTG STAIRWAY DOOR REMOVED

NEW CIRCULATION DESK AREA, NEW CONFERENCE ROOM, NEW STAFF SPACE, AND NEW DIRECTOR'S OFFICE

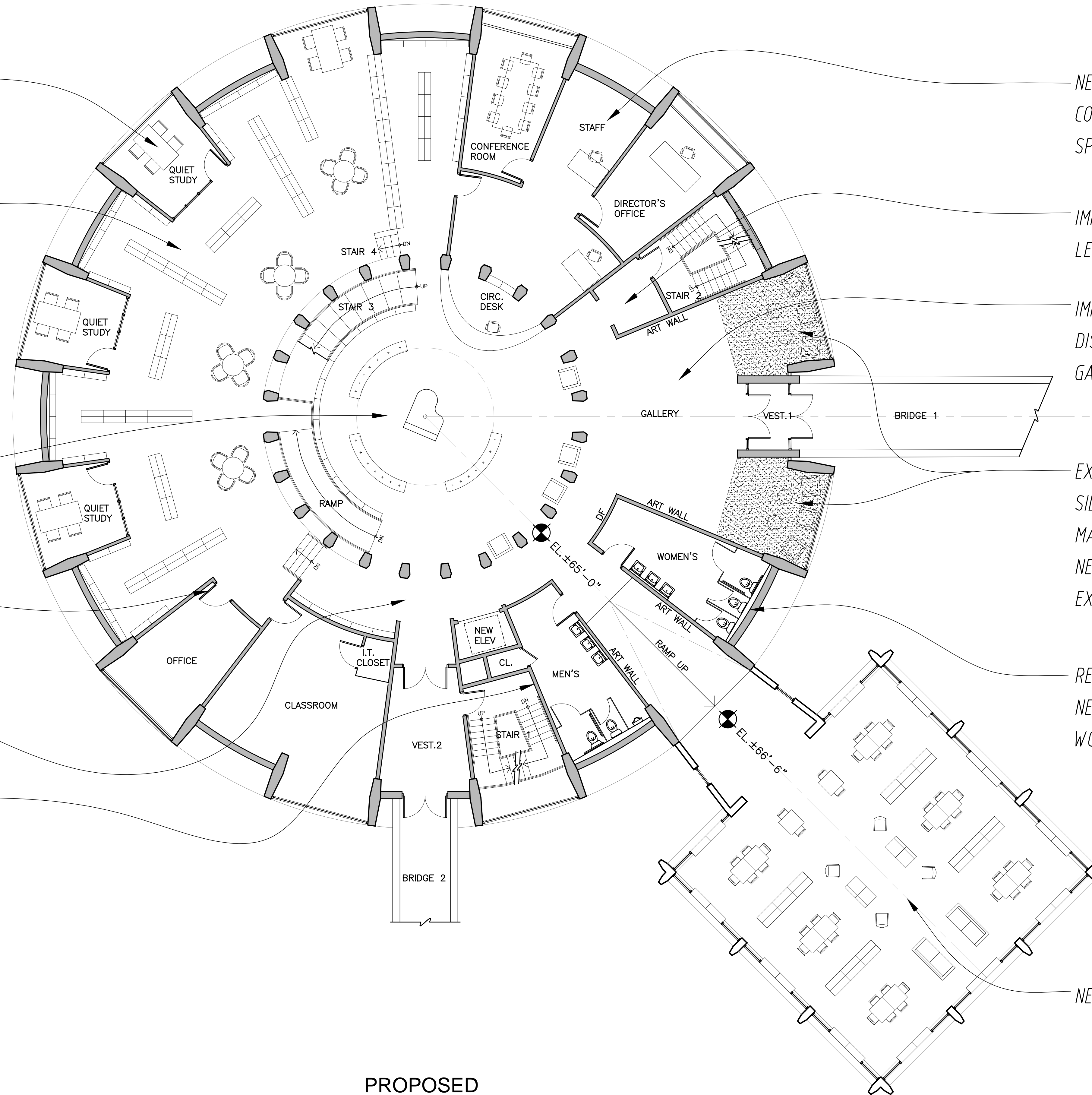
IMPROVE LIGHTING IN VESTIBULE LEADING TO CHILDREN'S LIBRARY

IMPROVE SYSTEM OF HANGING DISPLAYED ARTWORK IN THE GALLERY

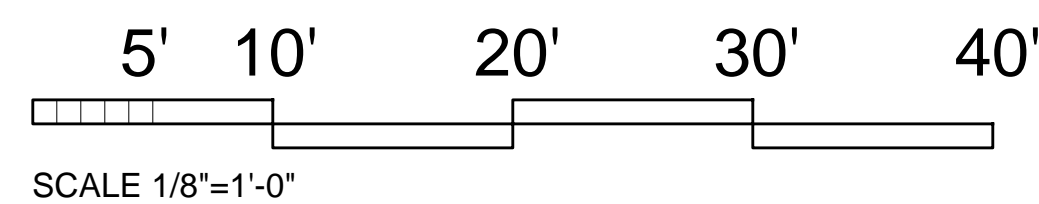
EXTEND EXTG FLOOR AT BOTH SIDES OF THE VESTIBULE TO MAXIMIZE AREA AT BAYS. INSTALL NEW TALL WINDOWS AT EACH EXTENDED BAY

RELOCATE DIRECTOR'S OFFICE. CREATE NEW ADA COMPLIANT MEN'S AND WOMEN'S TOILET

NEW READING SPACE



PROPOSED MAIN LEVEL PLAN



ALL EXISTING SHELVING AT WINDOWS TO REMAIN

PROPOSE LOW SHELVING TO IMPROVE SIGHTLINES. ARRANGE FURNITURE SPACING TO IMPROVE CIRCULATION AND ADA COMPLIANCE

EXISTING OFFICE FURNITURE TO REMAIN, NEW LIGHTS, NEW WALL/CEILING FINISHES

EXISTING FURNITURE TO REMAIN, NEW LIGHTS, NEW WALL/CEILING FINISHES

UPGRADE ELEVATOR CAB AND MACHINERY

NEW COMPUTER TABLE

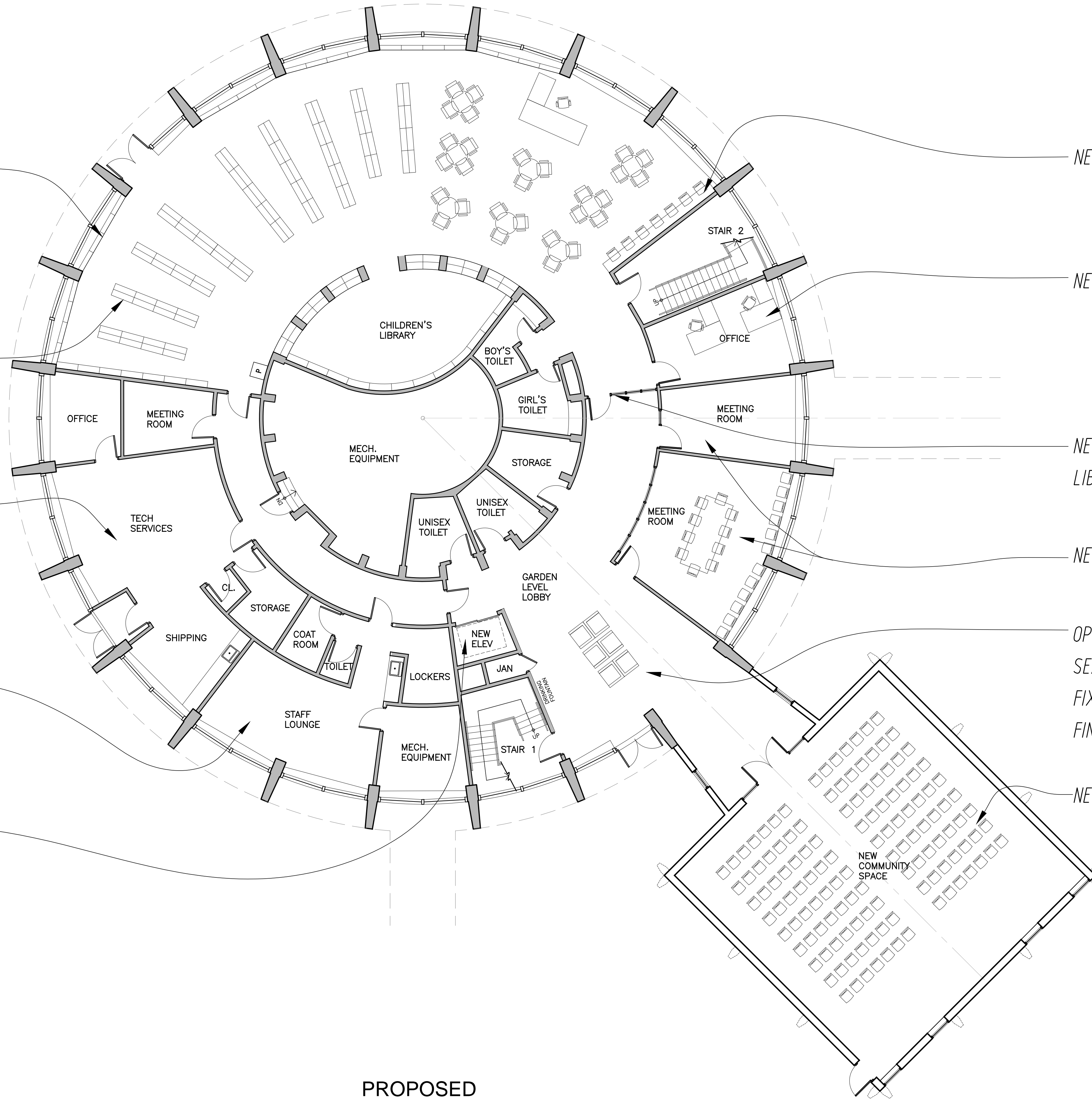
NEW CHILDREN'S LIBRARY OFFICE

NEW ENTRANCE TO CHILDREN'S LIBRARY

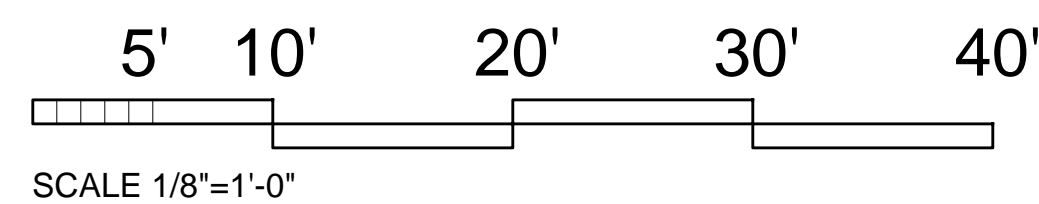
NEW MEETING SPACE

OPEN LOBBY SPACE WITH SOFT SEATING, LOOSE CHAIRS, NEW LIGHT FIXTURES, AND NEW FLOOR/CEILING FINISHES

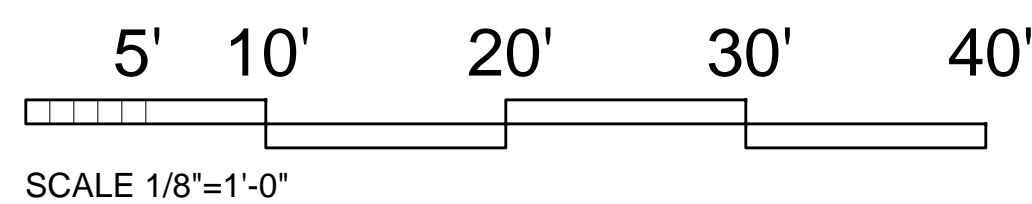
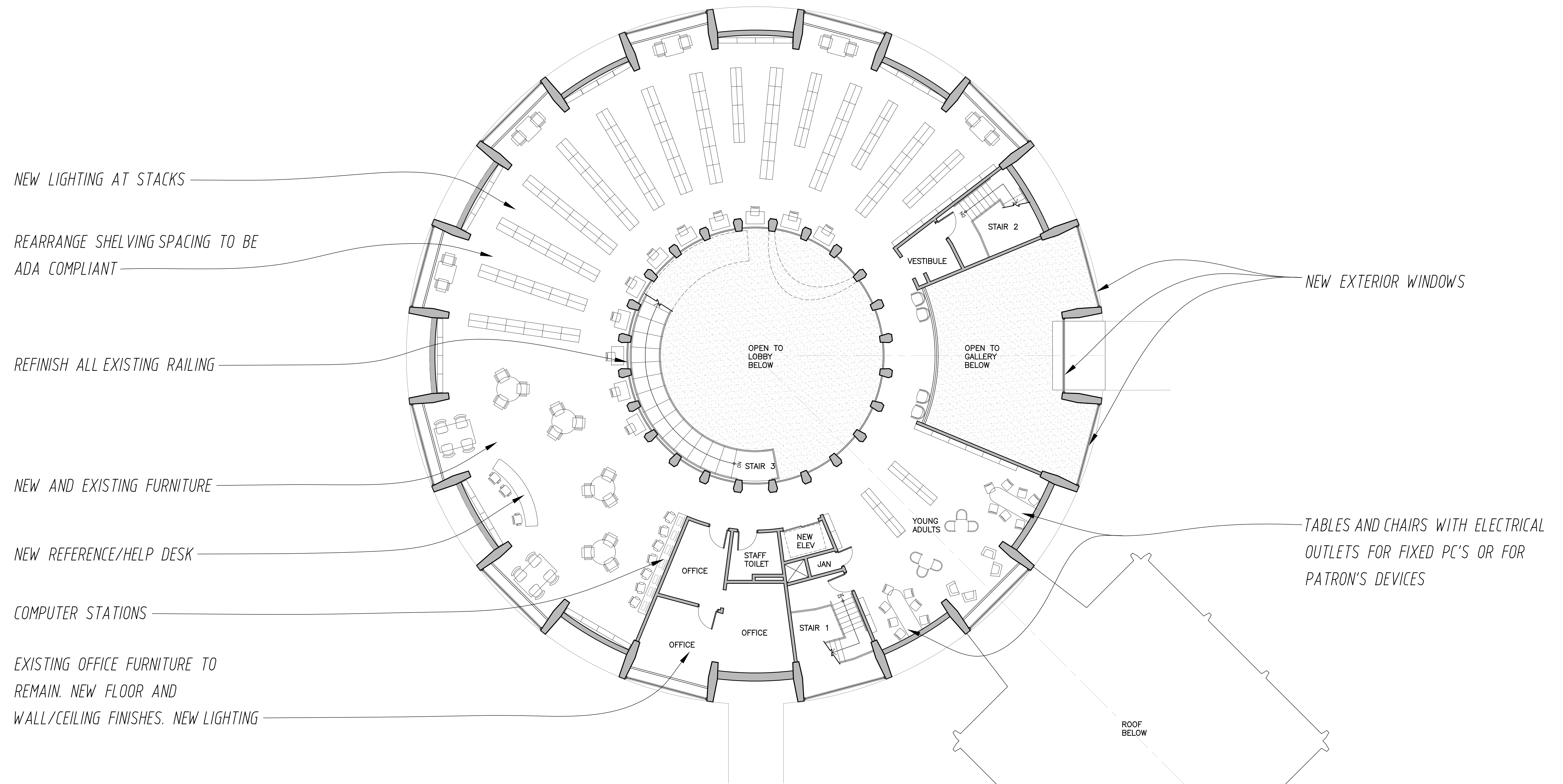
NEW COMMUNITY SPACE: 126 SEATS



PROPOSED GARDEN LEVEL PLAN







PROPOSED  
UPPER LEVEL PLAN